

## Axis3D for Geotechnical Applications

Axis3D GTM - Geotechnical Monitoring

Axis3D MON - Monitoring

### Related Products

Axis3D NET - Network Adjustment

Axis3D SET - Sets of Angles

Axis3D AMO - Automated Monitoring

Axis3D OBM - Tunnel Face Monitoring

Axis3D DGP - Deformation Graphics Professional

Axis3D DG3 - Deformation Graphics 3D

Axis3D DGE - Deformation Graphics Editor

Axis3D DGI - Deformation Graphics Import

Axis3D DGR - Deformation Graphics Real-Time

### Customers

DIBIT Measuring Technique

Kiewit Corporation (USA)

Rhomberg Sersa Rail Group

Stolitzka & Partner Civil Engineers

Vorarlberger Illwerke AG

### Contact Information

[www.axis3D.eu](http://www.axis3D.eu)

#### Significant Software KG

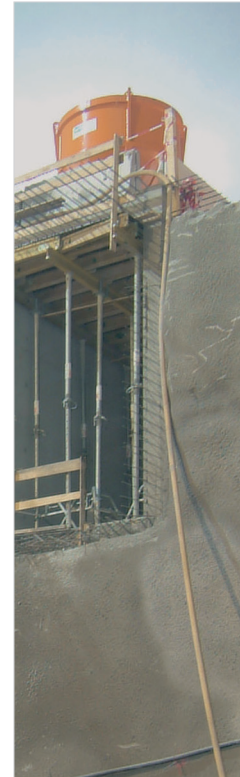
A-2514 Traiskirchen, Josef Bruna Strasse 28  
tel: +43 (0)676 733 61 44  
[office@significantsoftware.com](mailto:office@significantsoftware.com)  
[www.significantsoftware.com](http://www.significantsoftware.com)

#### Significant Software SARL

F-81470 Roquevidal, Lento Bas  
tel: +33 (0)6 35 94 53 50  
[france@significantsoftware.com](mailto:france@significantsoftware.com)  
[www.significantsoftware.com](http://www.significantsoftware.com)

# axis<sup>3D</sup>

## Axis3D for Geotechnical Applications



## Efficient . Proven . Comprehensive

Software- and surveying-solutions with flexible  
measurement methods, reliable calculations,  
and professional graphics.

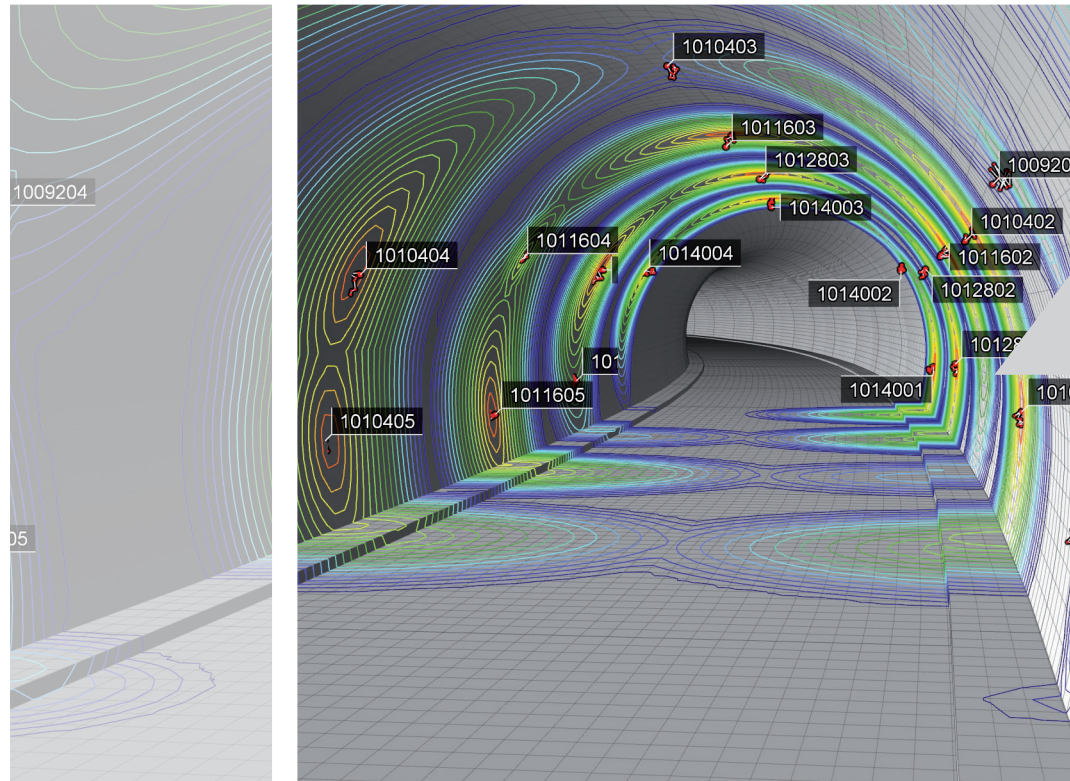
© Significant Software, all rights reserved  
images © Vorarlberger Illwerke AG

**significant**  
software



## Proven Methods

Axis3D geotechnical software workflows were developed in close cooperation with users. The products have been used on real construction projects over many years and are continually refined and improved. They are always state of the art.



## Comprehensive Results

The interpretation of measurement results is greatly simplified by a multitude of graphical illustration options. Graphics are created quickly and easily on-demand, so visualizations are always up-to-date and adapted to the individual project requirements.

## Axis3D Geotechnical Solutions

**New standards for efficient measurements and comprehensive graphics**

Axis3D geotechnical solutions include field and office software for the measurement, analysis, and graphical presentation of geotechnical measurements in tunnel and underground engineering.



## Efficient Workflows

Axis3D software solutions are adapted to tunnel and underground construction workflows, allowing for very efficient project execution. The individual configuration of data structure and an intuitive user interface allow for quick and appropriate reactions to varying requirements on construction sites.